

CONTENTS PAGE

2.4.3 TRANSFER PAYMENTS

Administration
Cultural Affairs

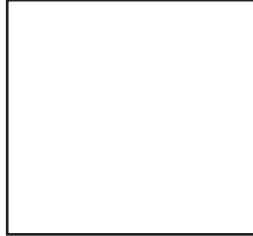
SECTION 1: GENERAL INFORMATION

1.1 SUBMISSION OF THE ANNUAL REPORT TO THE EXECUTIVE AUTHORITY

As the Accounting Officer for the first month of the year of reporting, and again as from

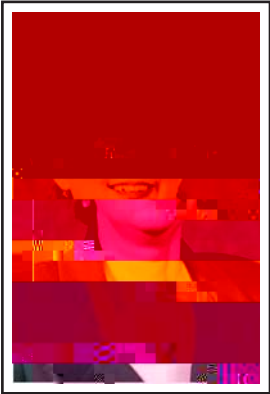
A handwritten signature in black ink, appearing to be 'M. J. G.', is written over a faint, dotted grid pattern.

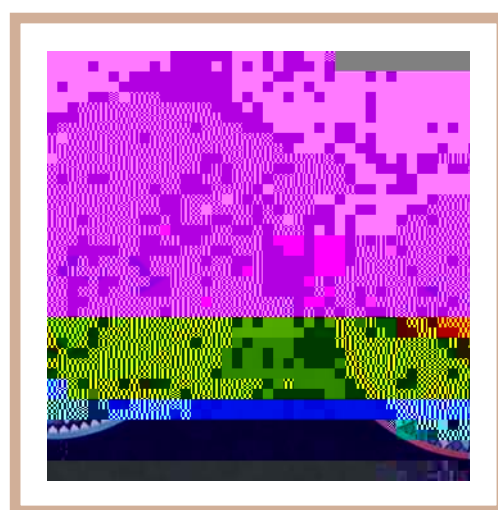
1.2 INTRODUCTION BY THE HEAD OF THE INSTITUTION



This report is presented in a year when we celebrate the tenth anniversary of the adoption of the

1.3 INFORMATION ON THE MINISTRY





The legislative competencies that are exclusive to the provincial government require that the department plays a key role in creating and nurturing an environment which will ensure successful and effective development and implementation of Government's policies and programmes.

In terms of **Schedule Six** of the Constitution, Youth development is a national competence.

Section 30 of the Constitution further provides that each citizen has the right to use the language and participate in the development of the country.

Sport and Recreation	
National Sport and Recreation Act, 1998	Defines the supportive role of the Sport Commission in relation to the Province.
Libraries, Information and Archives	
National Advisory Council for Library and Information Services	Advises National Minister of A&C, which might have an impact on Provincial functioning.

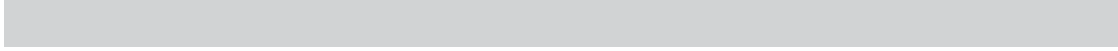
The Gauteng Provincial Language Policy Framework provides broad guidelines for the

SECTION 2: PROGRAMME PERFORMANCE

2.1 VOTED FUNDS

Appropriation	Main Appropriation	Adjusted Appropriation	Actual Amount Spent	Over/Under Expenditure	KEYn
---------------	-----------------------	---------------------------	------------------------	---------------------------	------

2.3.1 KEY STRATEGIC PRIORITIES



2.3.2.2 Cultural Affairs

The Cultural Affairs Programme (with sub-programmes Arts & Culture and Heritage, Language,

ii) **Preparations for 2010 FIFA World Cup**

The high level Political Task Team (PTT) and Technical Task Team (TTT) were appointed to co-ordinate the efforts of provincial and local government in ensuring the success of FIFA's 2010 World Cup. The initial task of the TTT, as directed by the PTT, was to unpack the commitments in the Bid Book as far as they apply to GPG and its municipalities, more especially the 7(th-38ost9(f)5f)-.1(a)-15he 72Cupe toject 4(Coordin)-14.1(ator)-738.6(w)19.n(a)-14.1(s)-718.5(a)-14.1rnament. More staff is in the process of being appointed. **Creative Industries Development Strategy**

The Creative Industries Development Strategy, whose key pillars are the development of artists

through partnership, was adopted by the Executive Committee in October

2.3.3.5 In addition, SRAC will focus on building an effective and caring government, by improving the department's ability to render services efficiently, working to align the department's work with other spheres of government, and promoting cooperative governance in all spheres of work. A particular focus in the role of the Department is to ensure that Youth Development is mainstreamed in all Gauteng Provincial Government departments.

i) Library Services

The assignment of the library function to local government has been identified as a high priority, and a Technical Task Team were established under the auspices of SALGA to make

avdp4.5(mins)-ioavptha un022 w(re)-664a022 w(rdr)-6122(S018 Tc [isa)-10f)9.9(s)0.1(t1101.1(a)-e3 T(t654.5(unam

iv) Youth Development

The Youth Development Directorate coordinated interdepartmental meetings and consolidated reports on implementation of youth related programmes. The Youth Directorate also assisted in the coordination of Youth Month (June) activities in a out (e)-882(Y)91.9(outh)-396lt,d

Rona Carnival; 2010 Political and Technical Task Team meetings between Local and Provincial Government Departments; Steering Committee meetings with the Department of Public Transport, Roads and Works and affected municipalities, to guide the implementation of the upgrade of the four competitive sport stadia.

establish sport clubs and sport councils at community level, and where necessary, share resources available at the hubs.

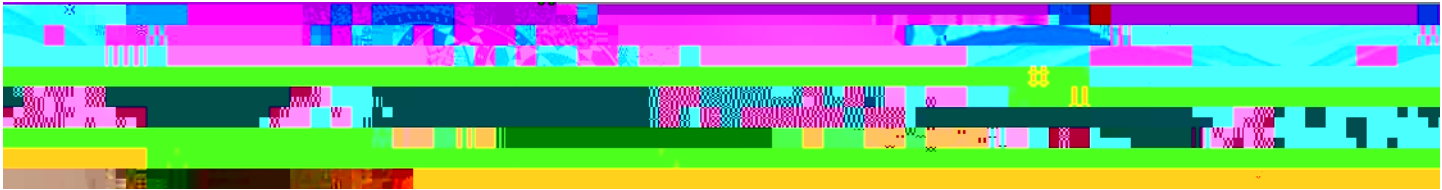
The 2010 FIFA World Cup programme has commenced by developing an Integrated Implementation Plan (IIP). The greatest challenge is to coordinate the three metros, various GPG Departments and other stakeholders to commit their 2010 programmes into an integrated model. Many do not attend the meetings regularly, whilst others do not submit plans and inform

To promote the equitable use of the 11 official languages of the province in order to realize social, cultural and linguistic justice;

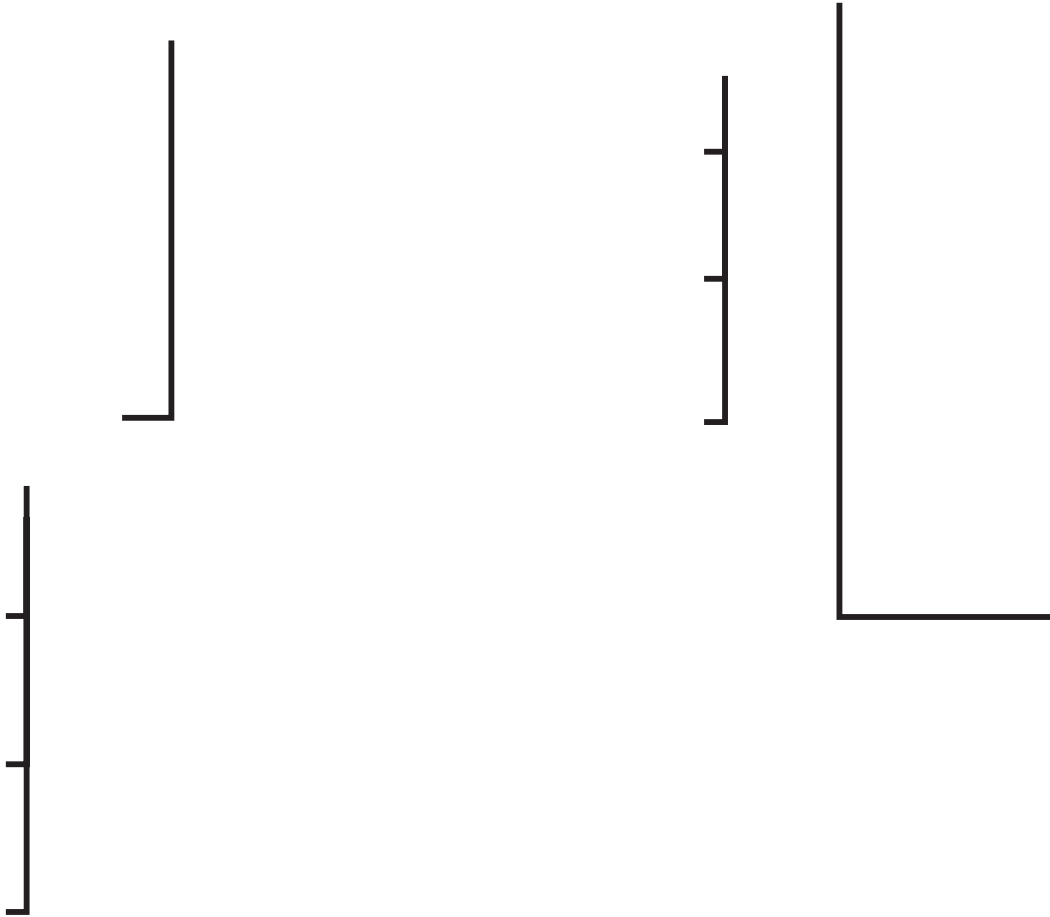
+

+

+



Chief Direc.5475 cm 0 0 6 116t-9. /F(o cm 0 r 6 116:))J -5.120W n1 M 0 0.D Chio 2.547mmufla 9.527s-9.872 2a 6.8222uth



Sithuthka Sonke Drama Players	30,000
Sonqoba Cultural Group	10,000



Total:

770,300



Description	Purchase Date	Purchase Value (R)	Case Number	Status
Laptop HP	11/11/2003	14,757.30	2240/4/2005	Replaced
Computer HP	11/11/2003	6,116.10	199/10/2005	Replaced
Laptop HP				

Measurable Objectives	Description of Output		Actual Performance against Tat9.8(g)0.2(e)-1 2005/06	0.12ts
-----------------------	-----------------------	--	---	--------



Actual Performance against Targets 2005/06				

--



1.6 YOUTH DEVELOPMENT

Actual Performance against Targets 2005/06				

Actual Performance against Targets
2005/06

Actual Performance against Targets
2005/06

PROGRAMME 2: CULTURAL AFFAIRS

Purpose

The programme is responsible for promoting, supporting and facilitating the development and contribution of arts, culture and heritage towards government's socio-economic objectives.

Measurable objectives

Develop and promote Gauteng as a preferred home or venue for arts and culture events to increase the contribution of Arts & Culture to the economy of Gauteng.

Develop a comprehensive craft development strategy for implementation in partnership with GEDA, GTA, and other stakeholders as a contribution to building creative industries as part of GPG's growth and development strategy and open economic opportunities for crafters.

Identify and develop talent, and create opportunities for sustainable livelihoods for artists.

Identify, preserve, develop and promote heritage resources to contribute to nation building and economic growth, and the growth of tourism in Gauteng.

Facilitate the development and management of Ge

2.1 ARTS AND CULTURE

Actual Performance against Targets



**Actual Performance against Targets
2005/06**

Actual Performance against Targets 2005/06	

2.2 HERITAGE, LANGUAGE, GEOGRAPHICAL NAMES AND MUSEUMS

Actual Performance against Targets
2005/06

Purpose

The Archives and Records management functions (a critical component of the effective and efficient management of government information to facilitate increased access) were initiated by allocating 3 staff members to research and kick-start the function. Various capacity building initiatives (such as visits to other Archives) were undertaken to empower staff to be able to develop an archival policy and implementation strategy for the function





PROGRAMME 4x SPORT & RECREATION

Purpose

The aim of this programme is to promote, support, facilitate development, and contribute towards Nation building, economic growth, creation of job



Actual Performance against Targets 2005/06	

--

Actual Performance against Targets
2005/06



**Actual Performance against Targets
2005/06**

[illegible]

Actual Performance against Targets
2005/06

The process of procuring the services of a specialist service provider that will begin to research the impact, return on investment and value for money that the activities, support interventions, programmes and initiatives of the Department have on the broader community will be concluded.

As part of continuously growing the Pale Ya Rona Carnival, we will increase the community participation component to include participation of 35 community based troupes across the province, and 10 floats from community art centers and recreation centers, and will receive training in carnival management and training. Besides the Carnival troupes, the Department will also implement other creative recreational programmes in the hubs, as well as fund specific

its aftermath, uprisings in the Vaal, et al. This initiative will also link with the developmentTm /C5.7a:g77.1f

We will continue to implement our commitments in the 2010 bid book to ensure that we derive maximum benefits that this event offers. The

**GAUTENG – DEPARTMENT OF SPORT, ARTS, CULTURE AND RECREATION
VOTE 12**

**ANNUAL FINANCIAL STATEMENTS
for the year ended 31 March 2006**

CONTENT

Page



GAUTENG – DEPARTMENT OF SPORT, ARTS, CULTURE AND RECREATION

**GAUTENG – DEPARTMENT OF SPORT, ARTS, CULTURE AND RECREATION
VOTE 12**

**REPORT OF THE ACCOUNTING OFFICER
for the year ended 31 March 2006**

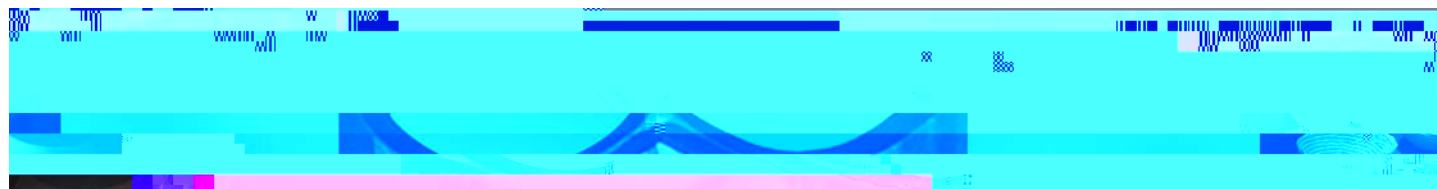
8.1.1 Risk Audits

The following high risk areas were audited:

Administration of Human Resources (Follow up);

**GAUTENG – DEPARTMENT OF SPORT, ARTS, CULTURE AND RECREATION
VOTE 12**

**REPORT OF THE ACCOUNTING OFFICER
for the year ended 31 March 2006**



“การดำเนินงานตามแผนปฏิบัติการฯ”

[illegible]

COLE, Mary

COLE, Mary

22



6. Unrescinded policies and procedures. Although this discussion cannot be held in full during a financial year under review.

**GAUTENG – DEPARTMENT OF SPORT, ARTS, CULTURE AND RECREATION
VOTE 12**

**ACCOUNTING POLICIES
for the year ended 31 March 2006**

The Annual Financial Statements have been prepared in accordance with the following policies, which have been applied consistently in all material aspects, unless otherwise indicated.

**GAUTENG – DEPARTMENT OF SPORT, ARTS, CULTURE AND RECREATION
VOTE 12**

ACCOUNTING POLICIES

GAUTENG – DEPARTMENT OF SPORT, ARTS, CULTURE AND RECREATION
VOTE 12

GAUTENG – DEPARTMENT OF SPORT, ARTS, CULTURE AND RECREATION

**GAUTENG – DEPARTMENT OF SPORT, ARTS, CULTURE AND RECREATION
VOTE 12**

**ACCOUNTING POLICIES
for the year ended 31 March 2006**

3.8 Transfers and subsidies

Transfers and subsidies are recognised as an expense when the final authorisation for payment is

**GAUTENG – DEPARTMENT OF SPORT, ARTS, CULTURE AND RECREATION
VOTE 12**

**ACCOUNTING POLUCUES
for the year ended 31 March 2006**

4.7 Asset registers

Assets are recorded in an asset register at cost, on receipt of the item. Cost of an asset is defined

**GAUTENG – DEPARTMENT OF SPORT, ARTS, CULTURE AND RECREATION
VOTE 12**

**GAUTENG – DEPARTMENT OF SPORT, ARTS, CULTURE AND RECREATION
VOTE 12**

GAUTENG – DEPARTMENT OF SPORT, ARTS, CULTURE AND RECREATION
VOTE 12

GAUTENG – DEPARTMENT OF SPORT, ARTS, CULTURE AND RECREATION
VOTE 12

APPROPRIATION STATEMENT
for the year ended 31 March 2006

Statutory Appropriation		2005/06		2004/05					
Details of direct changes against the National/Provincial Revenue Fund	Adjusted Appropriation	Shifting of Funds	Virement	Final Appropriation	Actual Payment	Variance	Payment as % of final appropriation	Final Appropriation	Actual payment

**GAUTENG – DEPARTMENT OF SPORT, ARTS, CULTURE AND RECREATION
VOTE 12**

DETAIL PER PROGRAMME 1: ADMINISTRATION
for the year ended 31 March 2006

	2005/06					Final	2004/05	ActualPayment
	Adjusted Appropriation	Shifts	Virement	of final		Appropriation as %	Appropriation	ActualPayment
				ActualPayment	Appropriation			

GAUTENG – DEPARTMENT OF SPORT, ARTS, CULTURE AND RECREATION
VOTE 12

DETAIL PER PROGRAMME 2: CULTURAL AFFAIRS
for the year ended 31 March 2006

				2005/06	2004/05
	Adjusted Appropriation	Shifting of Funds	Virement	Final Appropriation	Actual Payment

GAUTENG – DEPARTMENT OF SPORT, ARTS, CULTURE AND RECREATION
VOTE 12

GAUTENG – DEPARTMENT OF SPORT, ARTS, CULTURE AND RECREATION

**GAUTENG – DEPARTMENT OF SPORT, ARTS, CULTURE AND RECREATION
VOTE 12**

NOTES TO THE APPROPRIATION STATEMENT

	<i>Note</i>	2005/06 R'000R'000	2004/05
ASSETS			
Current assets	29,008	6,657	
Unauthorised expenditure			
Fruitless and wasteful	2	2,576	2,576

**GAUTENG – DEPARTMENT OF SPORT, ARTS, CULTURE AND RECREATION
VOTE 12**

**STATEMENT OF CHANGES IN NET ASSETS
for the year ended 31 March 2006**

Note

**GAUTENG – DEPARTMENT OF SPORT, ARTS, CULTURE AND RECREATION
VOTE 12**

**CAS– FLOW STATEMENT
for the year ended 31 March 2006**

	<i>Note</i>	2005/06 R'000	2004/05 R'000
CAS– FLOWS FROM OPERATING ACTIVITIES			
Receipts		196,447	

**GAUTENG – DEPARTMENT OF SPORT, ARTS, CULTURE AND RECREATION
VOTE 12**

NOTES TO THE ANNUAL FINANCIAL STATEMENTS

**GAUTENG – DEPARTMENT OF SPORT, ARTS, CULTURE AND RECREATION
VOTE 12**

**GAUTENG – DEPARTMENT OF SPORT, ARTS, CULTURE AND RECREATION
VOTE 12**

**NOTES TO THE ANNUAL FINANCIAL STATEMENTS
for the year ended 31 March 2006**

4.	Goods and services (continue)	<i>Notes</i>	2005/06 R'000	2004/05 R'000
-----------	--------------------------------------	--------------	--------------------------	--------------------------

**GAUTENG – DEPARTMENT OF SPORT, ARTS, CULTURE AND RECREATION
VOTE 12**

**NOTES TO THE ANNUAL FINANCIAL STATEMENTS
for the year ended 31 March 2006**

5. Financial transactions in assets and liabilities	<i>Notes</i>	2005/06 R'000	2004/05 R'000
Material losses through criminal conduct			
Other material losses written off		-	-
Debts written off	<i>5.1</i>	<u>8</u>	<u>100</u>
		8	100
5.1 Bad debts written off			
Nature of debts written off			
Transfer to debts written off		-	-
Previous employees debts written off		<u></u>	<u></u>
		8	100

6. Transfers and subsidiD0.086(a)0(n)50.3(d)-258.1(s)30(u)30.3(b)10.4(s)30(i)30C93(debt)27.9(i454ed)-27c[20)20(9.9(u39.t0

GAUTENG – DEPARTMENT OF SPORT, ARTS, CULTURE AND RECREATION

**GAUTENG – DEPARTMENT OF SPORT, ARTS, CULTURE AND RECREATION
VOTE 12**

**NOTES TO THE ANNUAL FINANCIAL STATEMENTS
for the year ended 31 March 2006**

12.2 Other debtors	2005/06 R'000	2004/05 R'000
Salary recalled and unpaid	3	2
Salary tax debt	4	-
Other (claims recoverable)	84	-
	<u>91</u>	<u>2</u>

13. Voted funds to be surrendered to the Revenue Fund	<i>Notes</i>	2005/06 R'000	2004/05 R'000
Opening balance		4,077	1,968
Transfer from Statement of Financial Performance		23,856	4,077

**GAUTENG – DEPARTMENT OF SPORT, ARTS, CULTURE AND RECREATION
VOTE 12**

**NOTES TO THE ANNUAL FINANCIAL STATEMENTS
for the year ended 31 March 2006**

These amounts are not recognised in the Annual Financial Statements and are disclosed to enhance the usefulness of the Annual Financial Statements.

18. Contingent liabilities

Liability to	Nature	Note	2005/06 R'000	2004/05 R'000
Housing loan guarantees o	Employees	A 3A003	2 6	

GAUTENG – DEPARTMENT OF SPORT, ARTS, CULTURE AND RECREATION
VOTE 12

ANNEXURES TO THE ANNUAL FINANCIAL STATEMENT
for the year ended 31 March 2006

ANNEXURE 1A
STATEMENT OF CONDITIONAL GRANT RECEIVED

	GRANT ALLOCATION	SPENT	2004/05
--	------------------	-------	---------

GAUTENG – DEPARTMENT OF SPORT, ARTS, CULTURE AND RECREATION
VOTE 12

**GAUTENG – DEPARTMENT OF SPORT, ARTS, CULTURE AND RECREATION
VOTE 12**

ANNEXURES TO THE ANNUAL FINANCIAL STATEMENTS

GAUTENG – DEPARTMENT OF SPORT, ARTS, CULTURE AND RECREATION
VOTE 12



GAUTENG – DEPARTMENT OF SPORT, ARTS, CULTURE AND RECREATION
VOTE 12

GAUTENG – DEPARTMENT OF SPORT, ARTS, CULTURE AND RECREATION
VOTE 12

ANNEXURES TO THE ANNUAL FINANCIAL STATEMENTS
for the year ended 31 March 2006

	400	-	-	400	400	100.0%	200
Gauteng Academy							
Ekasi WAE	-	-	-	-	-	100.0%	15

GAUTENG – DEPARTMENT OF SPORT, ARTS, CULTURE AND RECREATION
VOTE 12

ANNEXURES TO THE ANNUAL FINANCIAL STATEMENTS
for the year ended 31 March 2006

ANNEXURE 1L
STATEMENT OF TRANSFERS/SUBSIDIES TO HOUSEHOLDS AS AT 31 MARCH 2006

GAUTENG – DEPARTMENT OF SPORT, ARTS, CULTURE AND RECREATION
VOTE 12

**GAUTENG – DEPARTMENT OF SPORT, ARTS, CULTURE AND RECREATION
VOTE 12**

**GAUTENG – DEPARTMENT OF SPORT, ARTS, CULTURE AND RECREATION
VOTE 12**

ANNEXURES TO THE ANNUAL FINANCIAL STATEMENTS

Table 1.3 – Service deli very access strategy

TABLE 2.2 – Personnel costs by salary bands



4.4 Job Evaluation

TABLE 4.1 – Job Evaluation by salary band

--









TABLE 9.2 – Disability leave (temporary and permanent), 1 January 2005 to 31 December 2005

4.10 HIV/AIDS and Health Promotion Programmes

TABLE 10.1 – Steps taken by the Department to reduce the risk of occupational exposure







NOTES

NOTES

NOTES

NOTES

[illegible]

